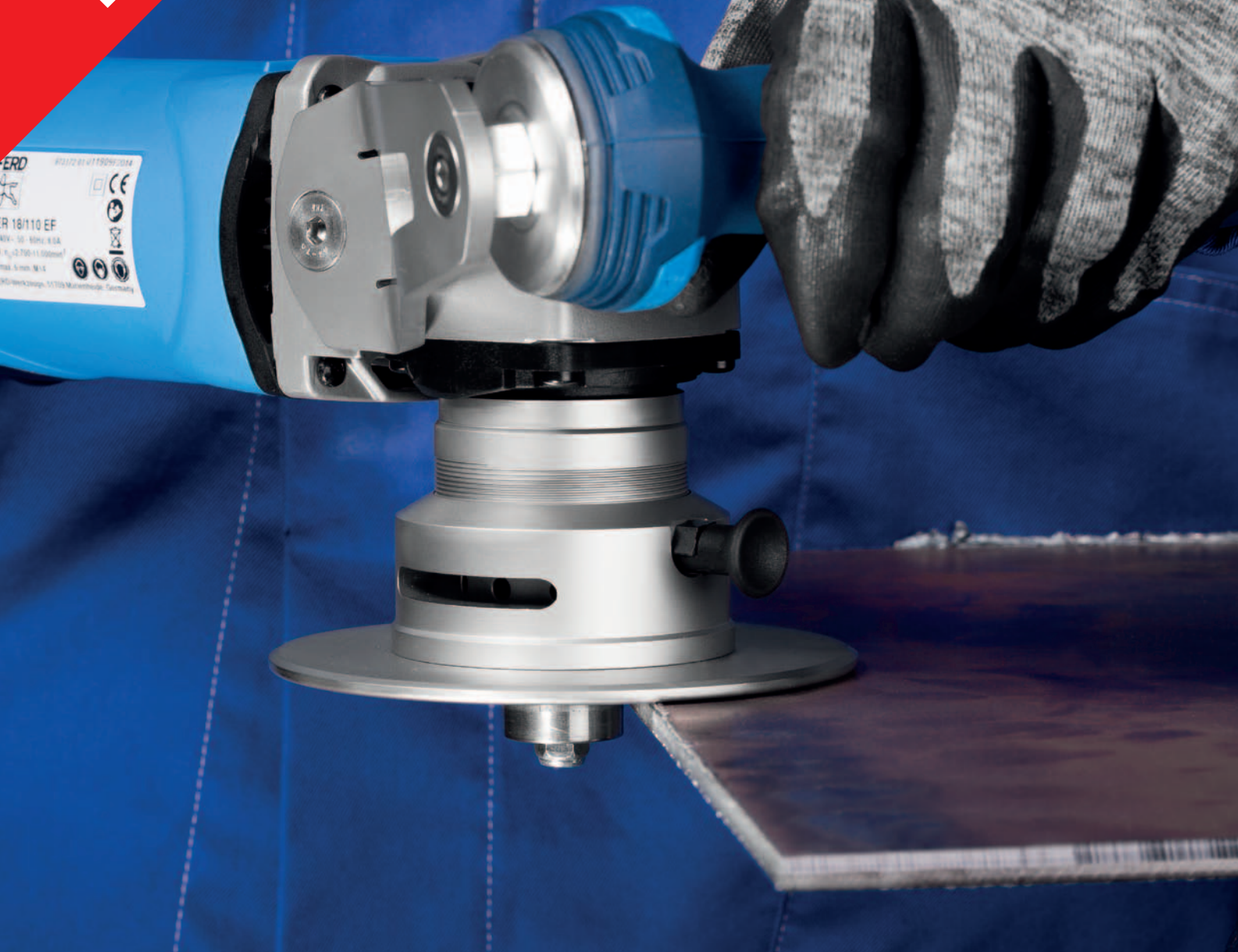


EDGE FINISH system for work on edges  
Defined edges in a one-step operation



New!



TRUST BLUE

- Generates defined 30° chamfering, 45° visible edges or 3 mm radii in a one-step operation
- Highest working comfort and optimum guidance thanks to the ergonomically optimized design
- Best stock removal rate and long tool life thanks to the specially coated cutting inserts

# EDGE FINISH system for work on edges

## Defined edges in a one-step operation

In addition to a specially designed drive, the EDGE FINISH system for work on edges includes a cutting tool used for defined chamfering, edge breaking and producing rounded edges on medium- to large-sized steel tools.

Through the selection of the appropriate tungsten carbide cutting inserts and matching tool mounting, exact edge shapes can be created with either 30° or 45° chamfering, or with a defined radius of 3.0 mm. The desired chamfer height is adjustable from 1 to 6 mm. The special tungsten carbide cutting inserts have a high-quality coating and achieve the best stock removal results.

Among other things, rounding edges is a precautionary measure for anti-corrosion protection according to:

- ISO 12944-3
- ISO 8501-3
- SOLAS XII/6.3 (Ref. T4/3.01 MSC.1/Circ. 1198)

### Safety notes:

- Never use damaged cutting inserts! There is a risk of breaking!



= Wear eye protection!



= Wear gloves!



= Wear hearing protection!



= Read the safety instructions!



= Observe the recommended rotational speed!

### Advantages:

- Large time savings by producing defined edges in a one-step operation
- Highest working comfort and optimum guidance thanks to the ergonomically optimized design and very good haptics
- Best stock removal rate and long tool life thanks to the specially coated cutting inserts
- Chamfer height individually adjustable up to 6 mm
- Working with minimal effort thanks to the anti-vibration handle SENSOHANDLE

### Application examples:

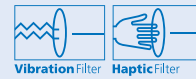
- Rounding edges in preparation for application of anti-corrosion coatings in shipbuilding, on crane systems and other medium- to large-sized steel constructions which are exposed to corrosion loading
- Chamfering for weld seam preparation of medium- to large-sized components (V-shaped seam 60° according to ISO 9692-1)
- Chamfering for edge breaking (45° visible edge)

### Recommendations for use:

- Set the EDGE FINISH system to **speed range 7,100 to 8,700 RPM**.
- Run the EDGE FINISH system over the workpiece in reverse rotation, to prevent damage to the tool and to avoid chatter marks on the workpiece.
- Machine highly uneven burn ridges beforehand using reinforced grinding wheels or POLIFAN® flap discs, to avoid damage to the cutting inserts and to achieve better guidance.
- Increase the tool life of drive and tool by appropriate maintenance and proper storage.



**PFERDERGONOMICS®** recommends the EDGE FINISH system as an innovative tool solution for comfortable working with reduced vibration, good haptics and optimized tool guidance.



**PFERDEFFICIENCY®** recommends the EDGE FINISH system for long, resource-saving work, with minimal effort and perfect results in the shortest possible time.



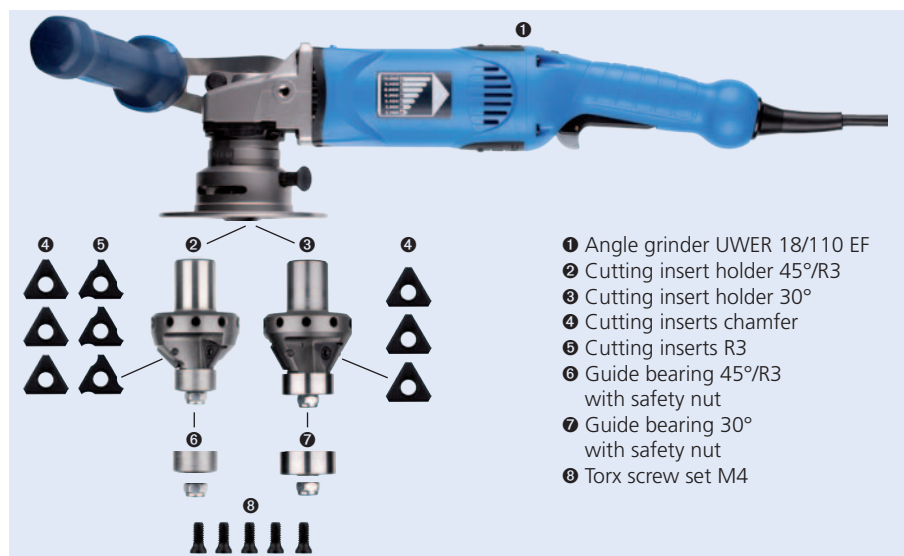
### PFERDVIDEO

You will receive more information here or at [www.pferd.com](http://www.pferd.com)

## Construction of EDGE FINISH system for work on edges

A powerful angle grinder with rotational speeds of 2,750 to 11,000 RPM provides the basis for this compelling system. Two different cutting insert holders are available and can, if necessary, be replaced at any time. They specify the desired angle of 30° or 45° and come with three tungsten carbide cutting inserts. In combination with a high-quality surface coating, these inserts allow outstanding stock removal rates and produce defined chamfers or radii depending on the type. The guide bearing ensures optimum guidance along the edges to be finished.


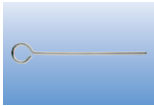

All of the described parts are available both as a complete system (see page 3) and separately. The available, robust transport case provides the best possible protection and has enough space for accessories (see page 4).



- 1 Angle grinder UWER 18/110 EF
- 2 Cutting insert holder 45°/R3
- 3 Cutting insert holder 30°
- 4 Cutting inserts chamfer
- 5 Cutting inserts R3
- 6 Guide bearing 45°/R3 with safety nut
- 7 Guide bearing 30° with safety nut
- 8 Torx screw set M4



### Installation accessories:

	<b>Description</b>	<b>EAN</b>
	SKS SW 5 mm	204467
	<b>Description</b>	<b>EAN</b>
	STS D 4 mm	205020
	<b>Description</b>	<b>EAN</b>
	SDR TX 15K	007419

### UWER 18/110 EF-R3/45° TK and UWER 18/110 EF-30° TK

For optimum storage of drive and tools, the product is supplied in a sturdy plastic case.

Supplied content:

- UWER 18/110 EF with 4 m power cable, three keys and anti-vibration handle
- Cutting insert holder with guide bearing
- Screw set for cutting inserts

See table below for ordering data.

### EDGE FINISH system for work on edges in transport case (TK)



### Special features

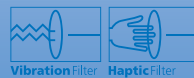
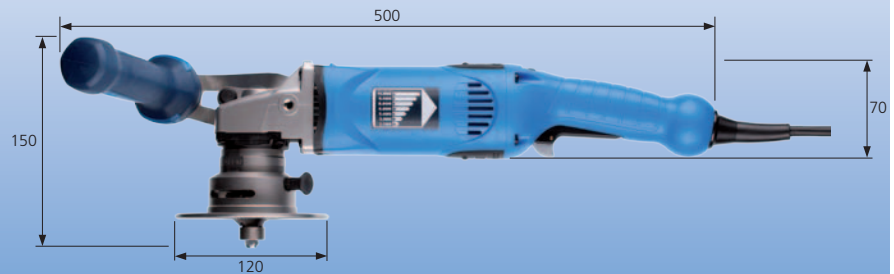
- Max. chamfer height 6 mm
- Stepless rotational speed adjustment
- Digital electronics for constant rotational speed
- Restart protection in case of power failure
- Anti-vibration handle
- Smooth start-up for protection of people, tools and drive
- Lockable on-off switch
- Spindle lock pin

Recommended rotational speed range: 7,100–8,700 RPM

Supplied content: 4 m power cable, 3 keys, anti-vibration handle

### UWER 18/110 EF

Rotational speed: 11,000 RPM / Output: 1,750 watts



Description	EAN	Rotational speed [RPM]	Voltage [volts] 50–60 Hz	Power consumption [watts]	Power output [watts]	Spindle thread	Incl. cutting insert holder	Matching cutting insert holder	Net weight [kg]
EDGE FINISH UWER 18/110 EF-R3/45° TK 230V <sup>1)</sup>	004272	2,750–11,000	230	1,750	1,150	M14	EF-WSP-A R3/45°	EF-WSP-A R3/45°, EF-WSP-A 30°	7,360
EDGE FINISH UWER 18/110 EF-30° TK 230V <sup>1)</sup>	004364	2,750–11,000	230	1,750	1,150	M14	EF-WSP-A 30°	EF-WSP-A R3/45°, EF-WSP-A 30°	7,360
EDGE FINISH UWER 18/110 EF 230V <sup>2)</sup>	973172	2,750–11,000	230	1,750	1,150	M14	–	EF-WSP-A R3/45°, EF-WSP-A 30°	3,640

<sup>1)</sup> Cutting inserts are not included in the delivery. Please order separately (see page 4).

<sup>2)</sup> Cutting insert holder with guide bearing, cutting inserts and screw set are not included in the delivery. Please order separately (see page 4).

### Tungsten carbide burrs with EDGE cut

For the defined work on edges of small components or in hard-to-reach areas, PFERD offers **tungsten carbide burrs with EDGE cut**.

These are suitable for chamfering, deburring, edge breaking and rounding, and are mainly used in steel and aluminium construction.

In combination with the air-powered straight grinder PG 3/210 with matching guide sleeve EFH PG 3/210 and guide plate EFP PG 3/210, optimum guidability is achieved and thermal loads are reduced.

For more information, please refer to the Tool Manual 22, Catalogue 202 and 209.



### PFERDVIDEO

You will receive more information here or at [www.pferd.com](http://www.pferd.com)

# EDGE FINISH system for work on edges

Defined edges in a one-step operation



**Cutting insert set  
3 mm radius**



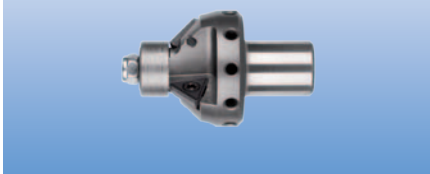
**Ordering example:**  
EAN 4007220005118  
EF-WSP-F

**Cutting insert set  
chamfer**



Description	EAN 4007220	Angle $\alpha$	Radius [mm]	Content of the set	Suitable for cutting insert holder	
<b>Cutting insert set 3 mm radius</b>						
EF-WSP-R3	005101	–	3.0	3	EF-WSP-A R3/45°	1
<b>Cutting insert set chamfer</b>						
EF-WSP-F	005118	45°/30°	–	3	EF-WSP-A R3/45°, EF-WSP-A 30°	1

**Cutting insert holder  
3 mm radius / 45° chamfer**



**Ordering example:**  
EAN 4007220005170  
EF-WSP-A 30°

**Ordering note:**  
■ The cutting inserts and matching screw sets are not included in the delivery. Please order separately.

**Cutting insert holder  
30° chamfer**



Description	EAN 4007220	Angle $\alpha$	Radius [mm]	Suitable for cutting inserts	Suitable for machine type	
<b>Cutting insert holder 3 mm radius / 45° chamfer</b>						
EF-WSP-A R3/45°	005200	45°	3.0	EF-WSP-R3, EF-WSP-F	UWER 18/110 EF	1
<b>Cutting insert holder 30° chamfer</b>						
EF-WSP-A 30°	005170	30°	–	EF-WSP-F	UWER 18/110 EF	1

**Guide bearing  
3 mm radius / 45° chamfer**



**Ordering example:**  
EAN 4007220005132  
EF-FL-30°

**Guide bearing  
30° chamfer**



Description	EAN 4007220	Suitable for cutting insert holder	
EF-FL-R3/45°	005163	EF-WSP-A R3/45°	1
EF-FL-30°	005132	EF-WSP-A 30°	1

**Screw set for cutting inserts**



**Ordering example:**  
EAN 4007220005392  
WSP-S-M4S



Description	EAN 4007220	Content of the set	Suitable for cutting inserts	
WSP-S-M4S	005392	5	EF-WSP-R3, EF-WSP-F	1

Printed in Germany.

Subject to technical modifications.

03/2015

819 203

